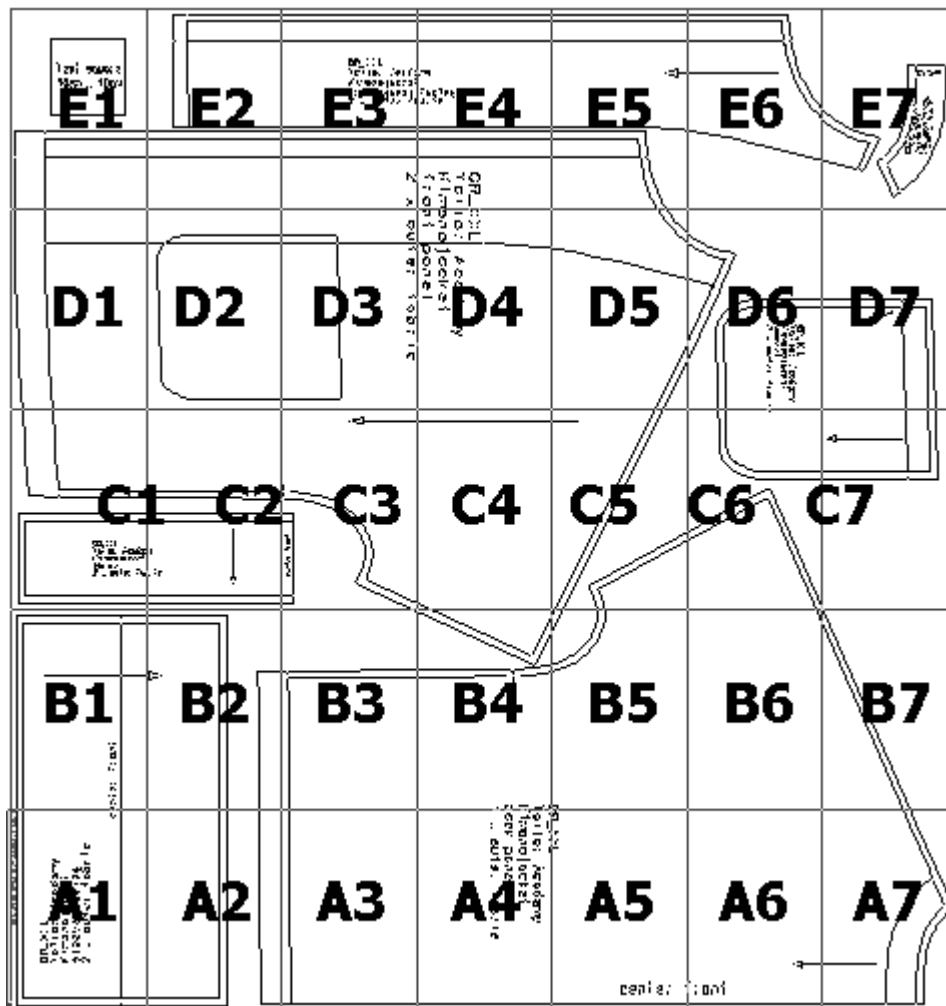


Printing overview

Important: Please print the test page to ensure your patterns are printed in the correct size. The test page and printing instructions are included in the downloads folder.



cent

ci r q a f j e t n o x z
g u i c a f e v e e l s
j a c k e t k i m o n o i
A c c a d e m y j o i d i a l
G R _ X S

((A,02): Kimono jacket.mdl (..\Tailor Academy_new\))

(A,03) : Kimono jacket.mdl (..\Tailor Academy_new\)	

to modify

mono jacket

ck panel

X outer fabric

(A,04) : Kimono jacket.mdl (..\Tailor Academy_new\)

center

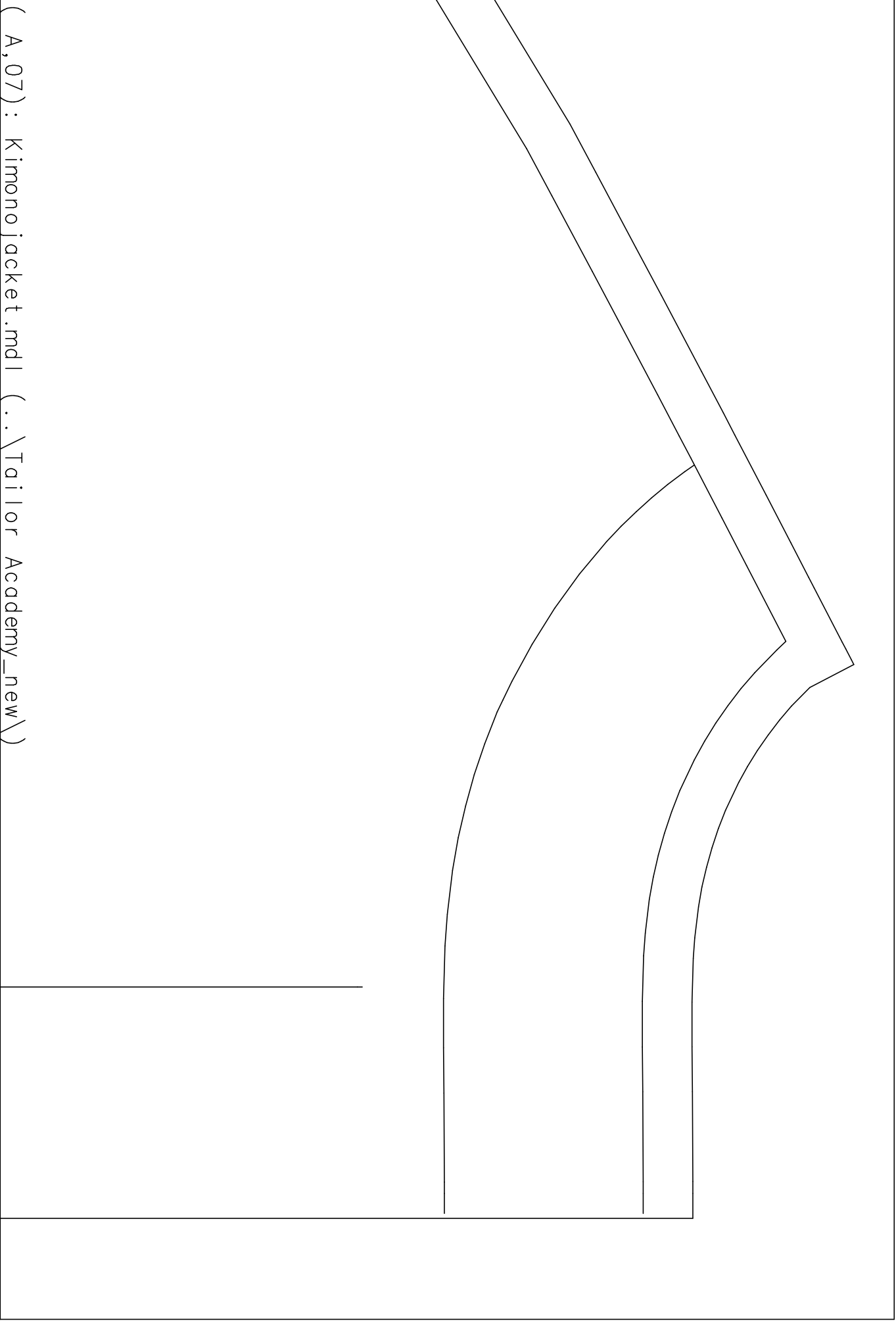
XS

(A, 0.5): Kimono jacket \ndr (.NT qth or Academy new \)

(A,06) : Kimono jacket.mdl (..\Tailor Academy_new\)

front



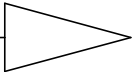


front

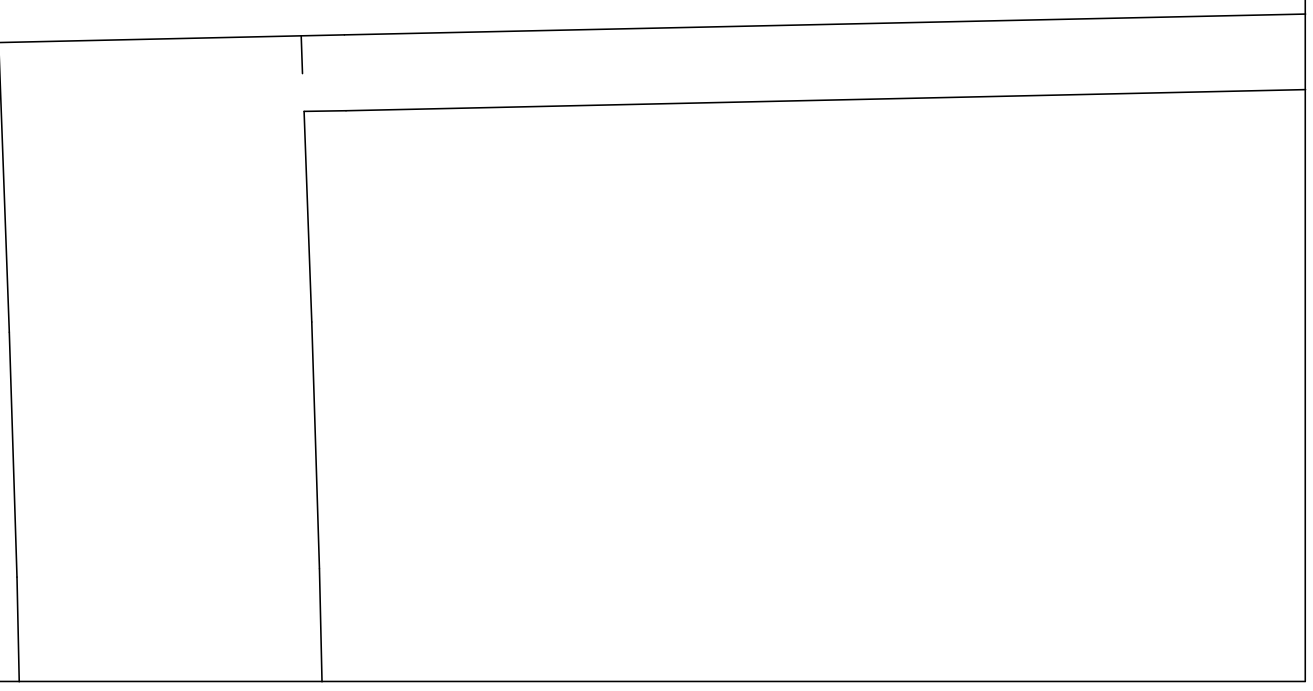
(B,01) : Kimono jacket.mdl (..\Tailor Academy_new\)

(B,02) : Kimono jacket.mdl

(..\Tailor Academy_new\)



(B,03) : Kimono jacket.mdl (..\Tailor Academy_new\)

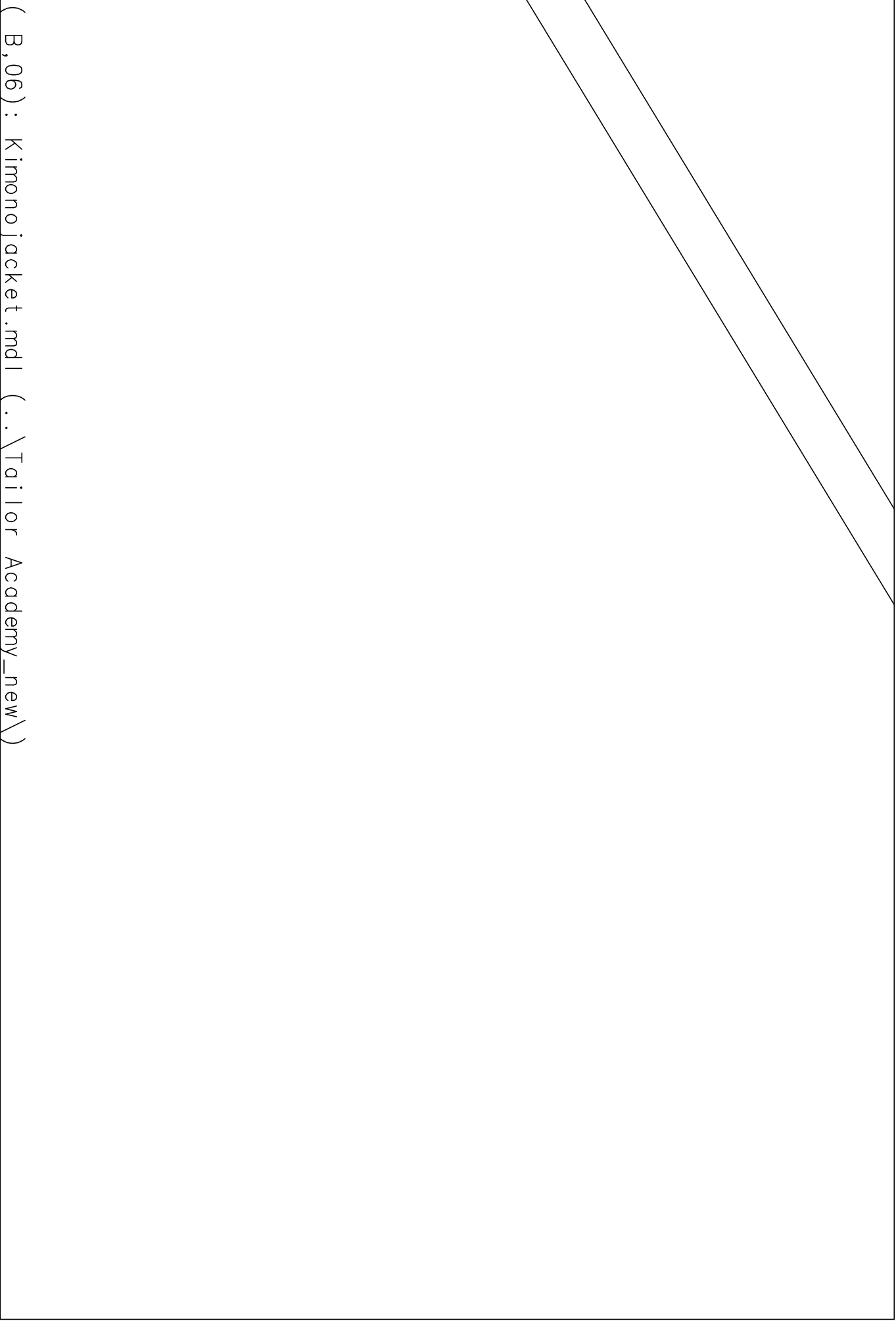


K
b
1

(B,04) : Kimono jacket.mdl (..\Tailor Academy_new\)

(B,05) : Kimono jacket.mdl (..\Tailor Academy_new\)

GR
T

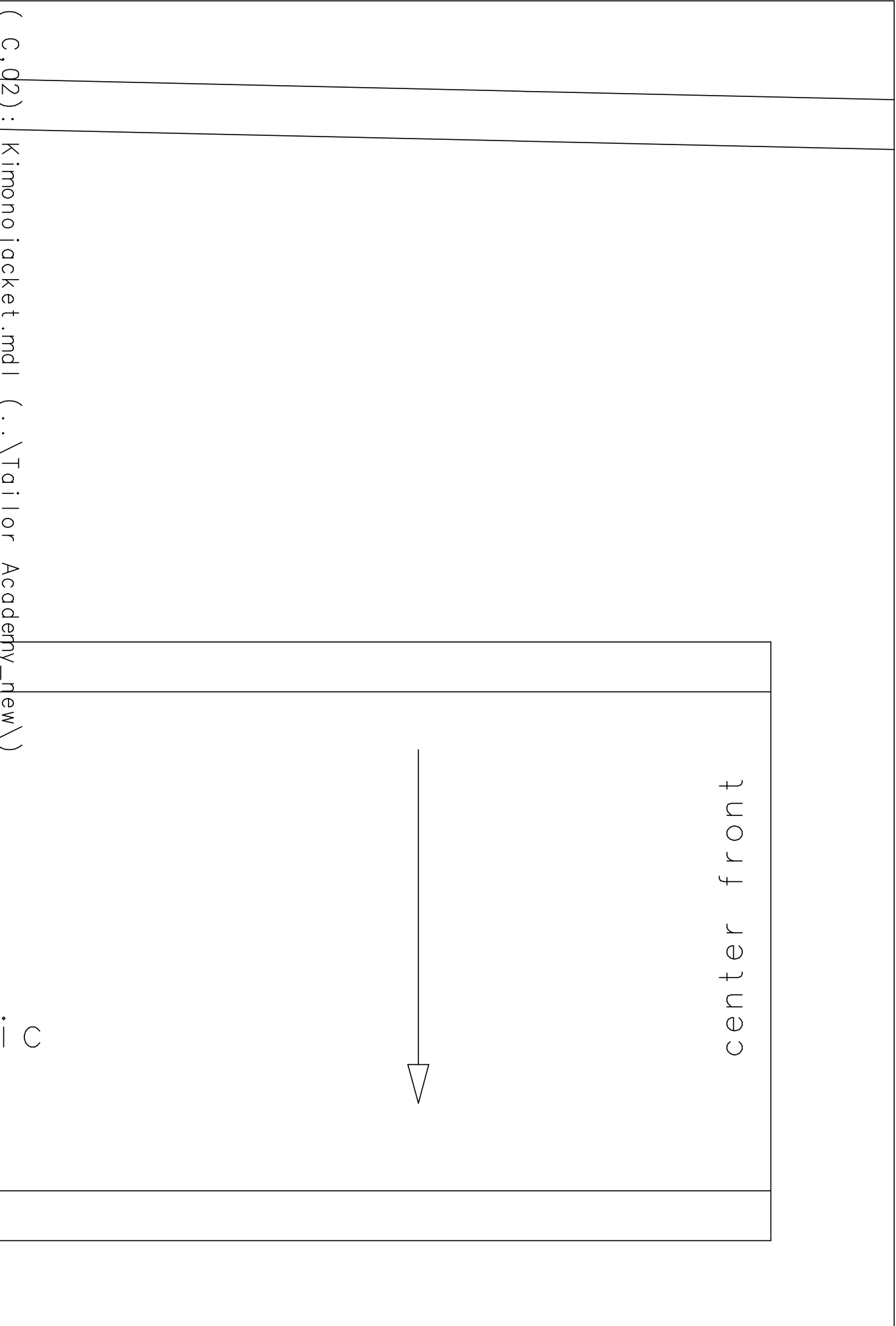


(B, 06) : Kimono jacket.mdl (.. \Tailor Academy_new \)

(B,07) : Kimono jacket.mdl (..\Tailor Academy_new\)

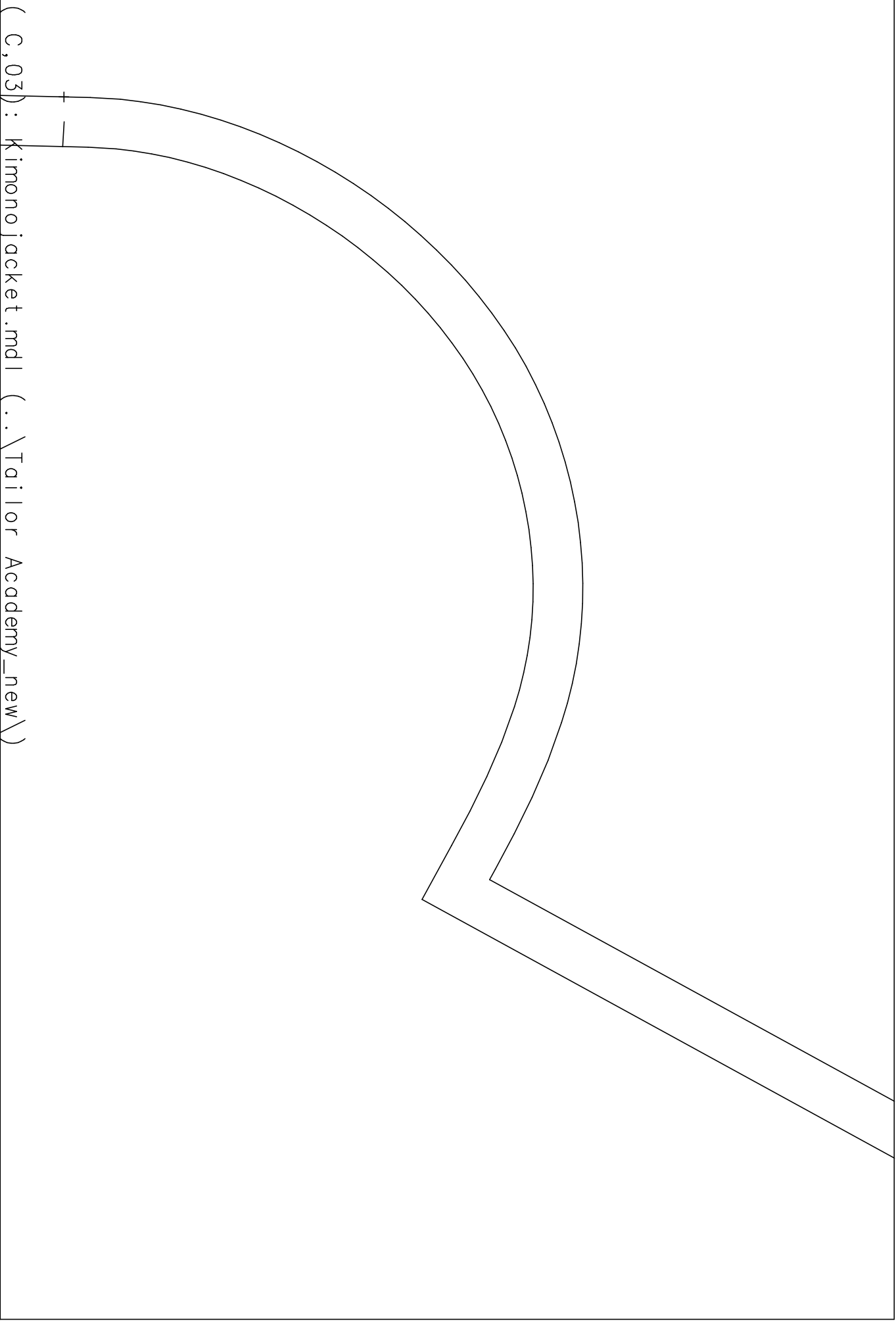
(C,01) : Kimono jacket.mdl (..\Tailor Academy_new\)

GR_XS
Tailor Academy
Kimono jacket
collar
2 x outer fabr

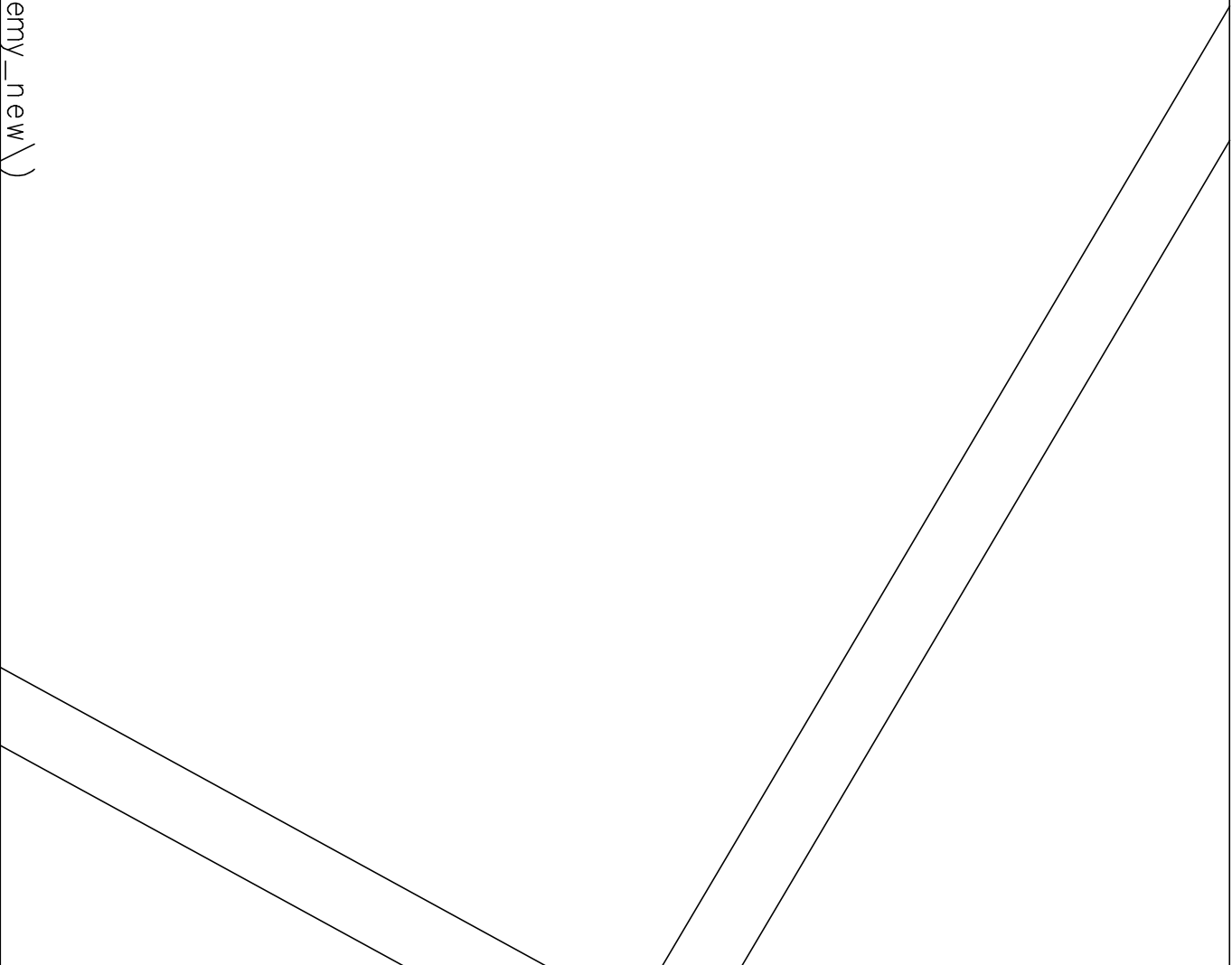


(C, 02) : Kimono jacket.mdl (.. \Tailor Academy_new \)

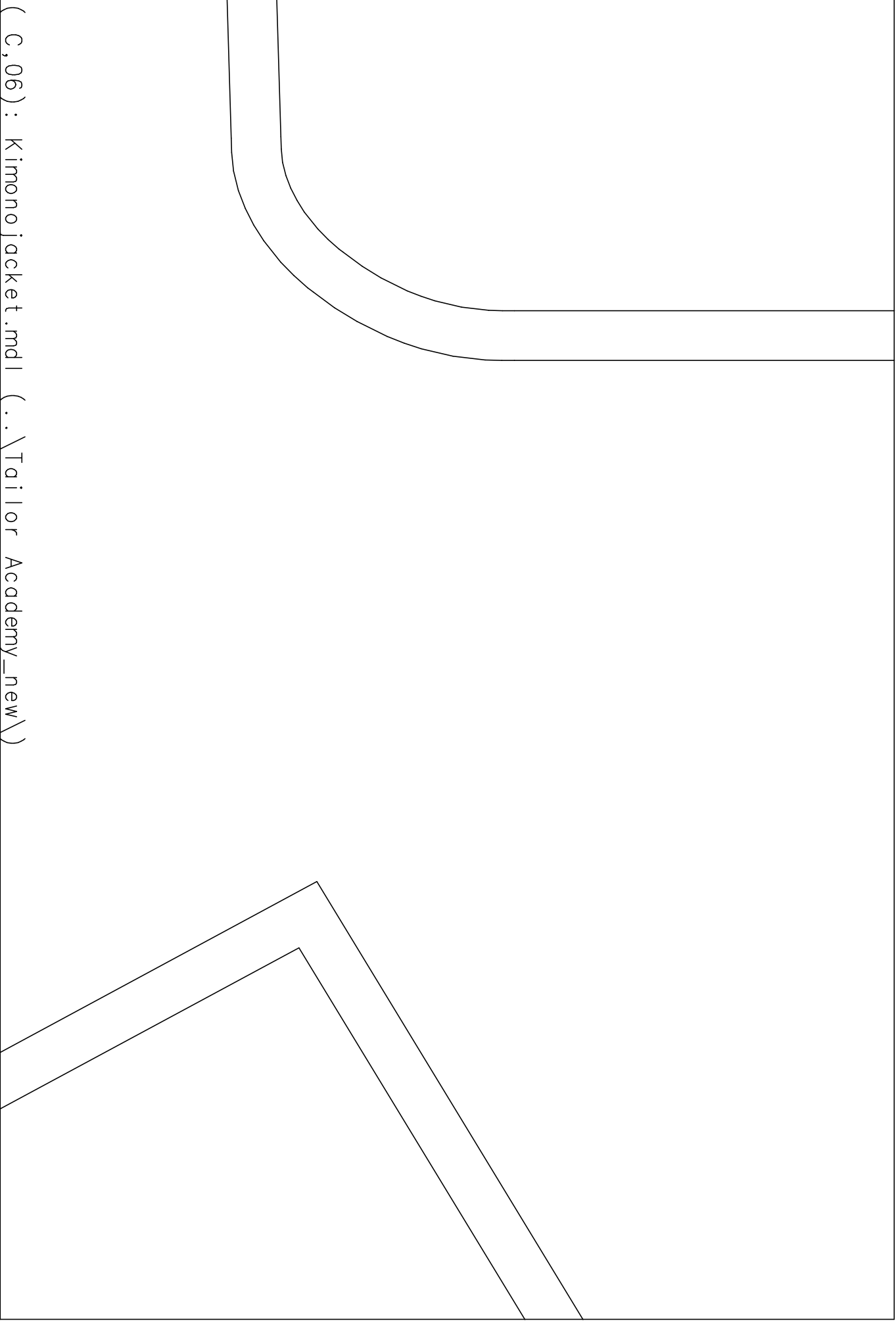
(C,03) : Kimono jacket.mdl (..\Tailor Academy_new\)



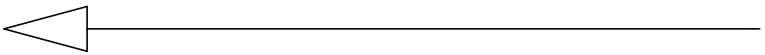
(C,04) : Kimono jacket.mdl (..\Tailor Academy_new\)



(C,05) : Kimono jacket.mdl (..\Tailor Academy_new\)

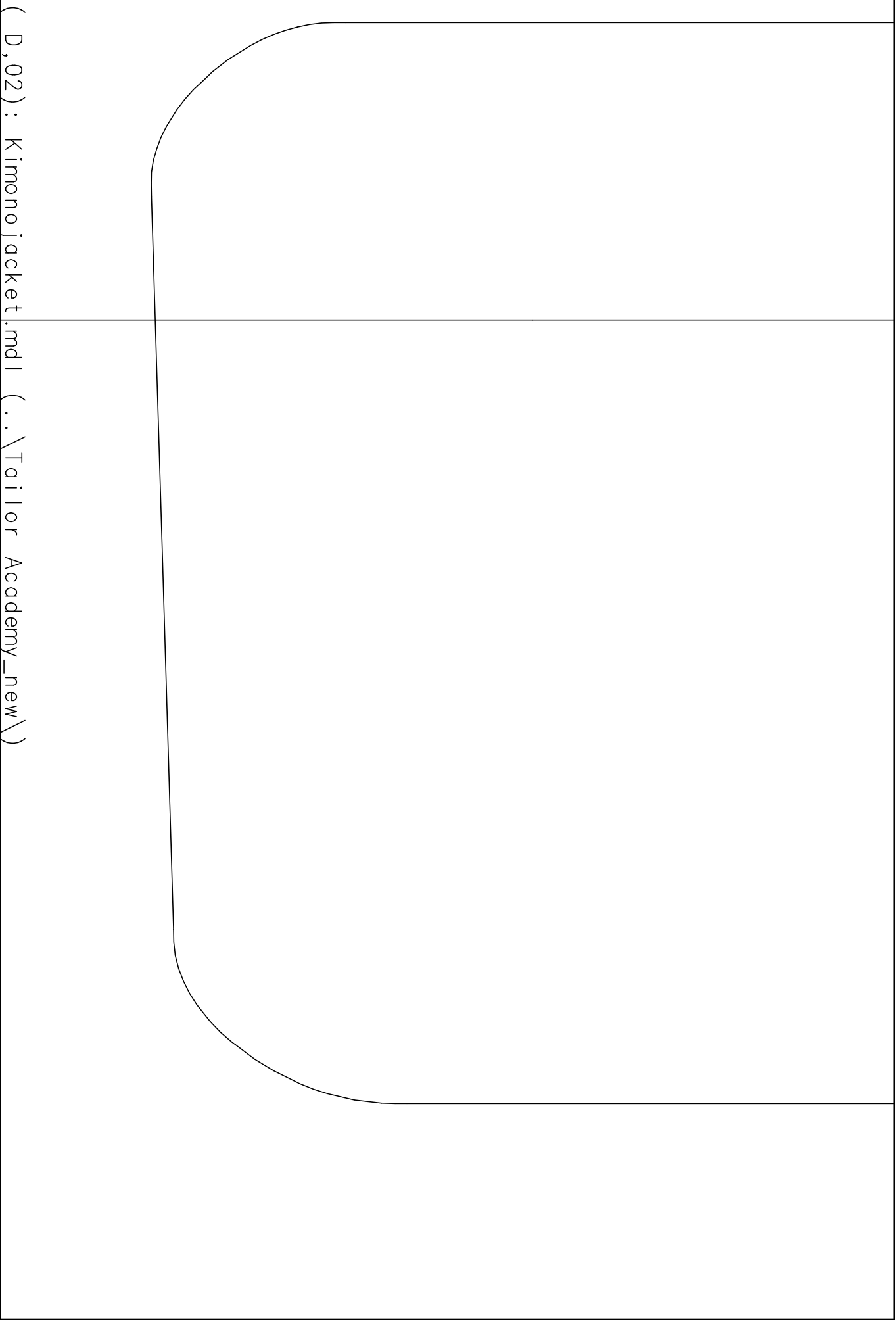


(C, 06) : Kimono jacket.mdl (.. \Tailor Academy_new \)



(C,07) : Kimono jacket.mdl (..\Tailor Academy_new\)

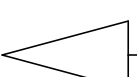
((D,01): Kimono jacket.mdl (..\Tailor Academy_new\))



(D,02) : Kimono jacket.mdl (..\Tailor Academy_new\)

Outer fabric

(D,03): Kimono jacket.mdl (..\Tailor Academy_new\)



XS

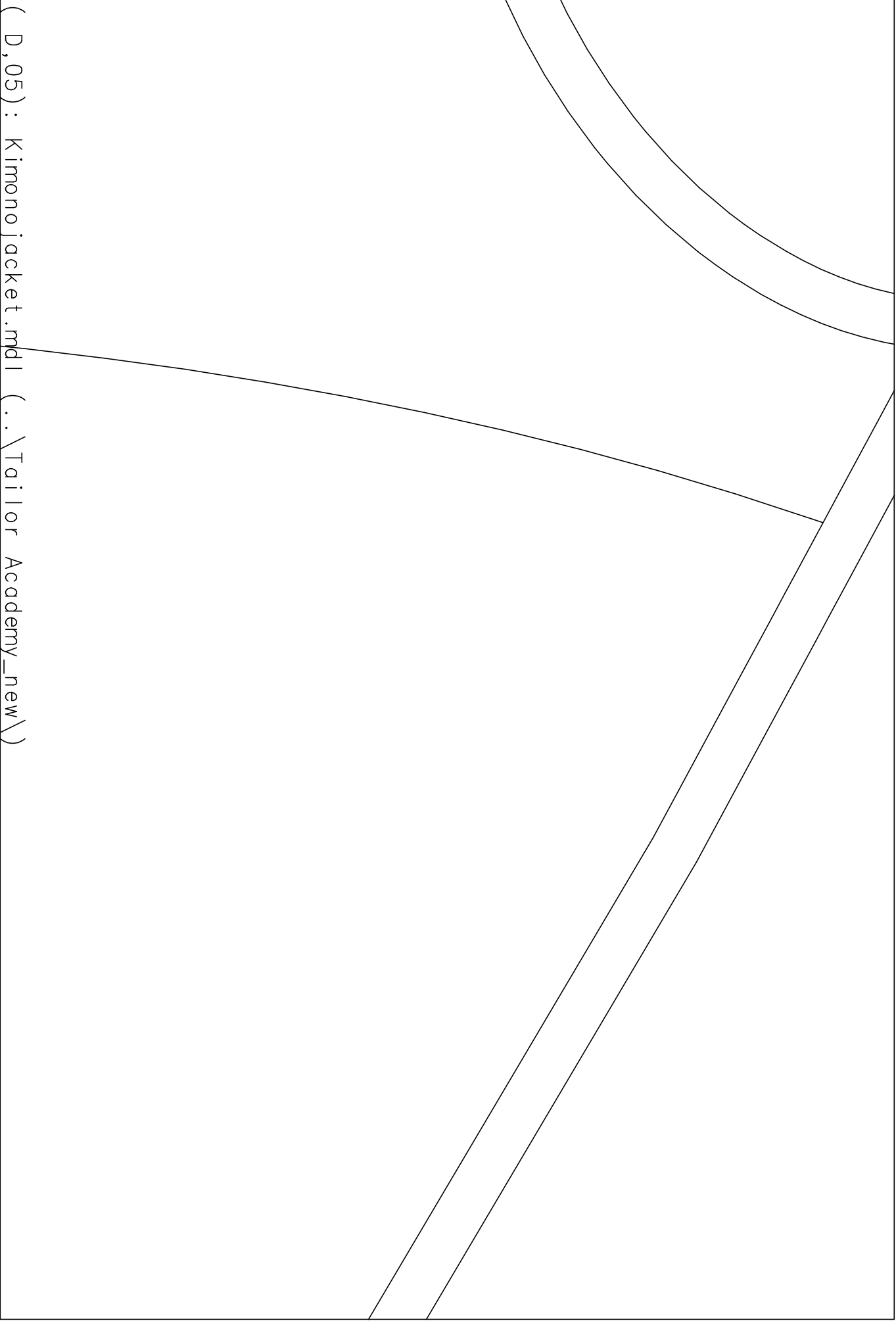
ilior

mon o

Academy

jack et

(B, 04) Kimono jacket .pdf (Tailor Academy New)



GR_XS
Tailor Academy
Kimono jacket
pocket
2 x outer fabric

(D,06) : Kimono jacket.mdt (~~.. \Tailor Academy_new\~~)

(D,07) : Kimono jacket.mdl (..\Tai or Academy_new\)

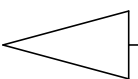
front

Test square
10cm x 10cm

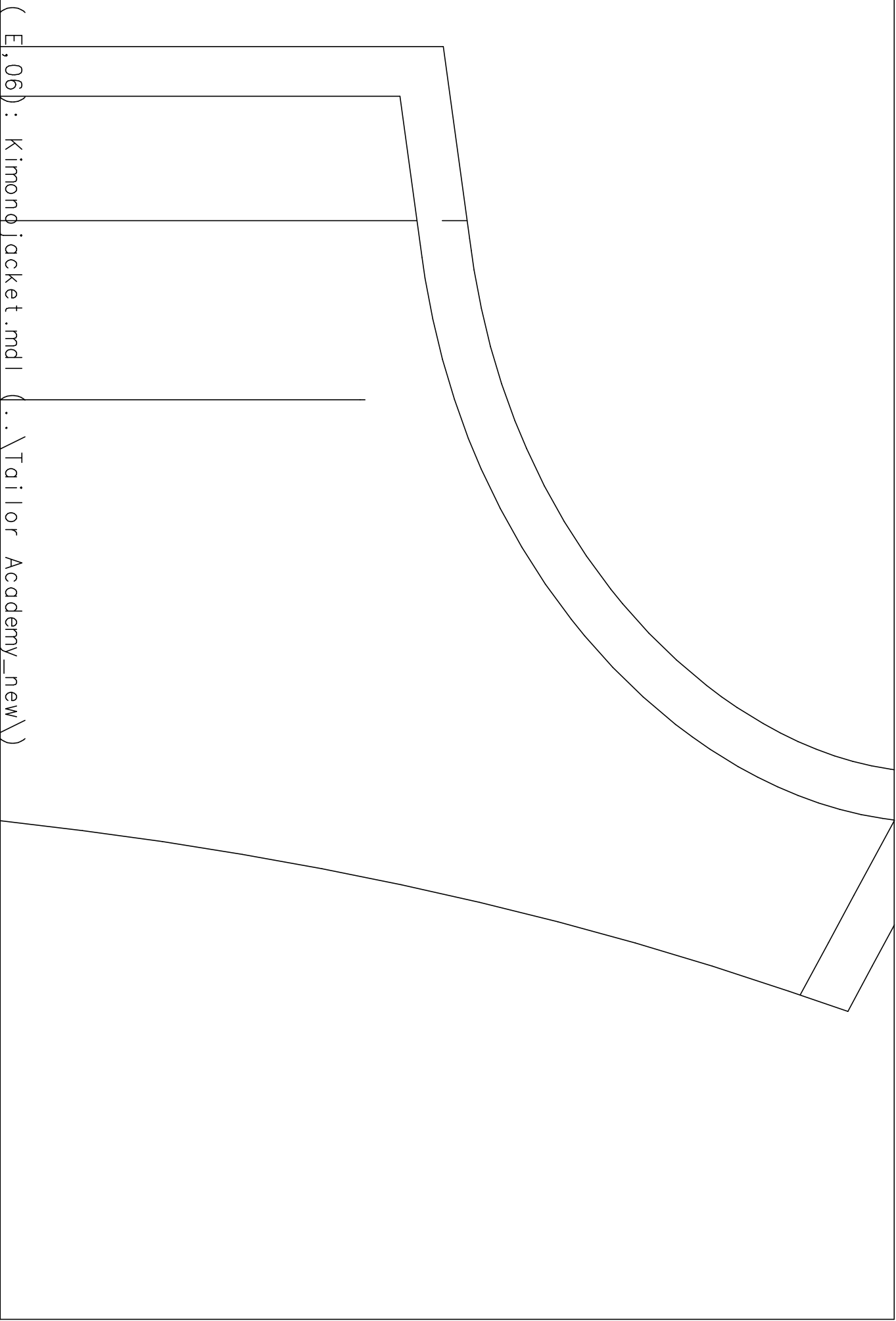
((E,02): Kimono jacket.mdl (..\Tailor Academy_new\))

(E,03) : Kimono jacket.mdl (..\Tailor Academy_new\)	<div data-bbox="734 627 1476 1097"> GR_XS Tailor Acader Kimono jacket front panel 2 x outer fa </div>
	<div data-bbox="1260 1881 1476 2060"> 2 </div>

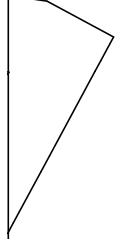
(E,04): Kimono jacket.mdl (~~St~~Tailor Academy_new)



(E,05) : Kimono jacket.mdl (..\Tailor Academy_new\)



GR_XS
Tailor Academy
Kimono jacket
back panel facing
1 x outer fabric
center front



(E, 07) : Kimono jacket.mdl (.. \Tailor Academy_new \)